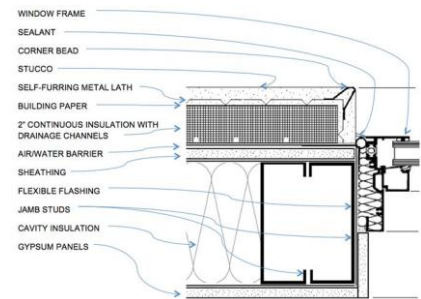


ABOUT THE SMA: The Stucco Manufacturers Association (SMA) is a non profit industry association incorporated in 1957. The SMA mission is to promote the use of stucco, accept regional differences and consolidate industry practices with the goal to be in harmony with the building code, ASTM and other standard setting organizations.

The SMA “Guide Details” are for use by designers, consultants, contractors, and inspectors at no charge. The intent is to provide generic guides and practices proven to work in a variety of situations. No specific detail is meant for any specific project: the user of the detail must decide if the detail is appropriate for their project, situation and/or location. Any alteration or modification of the SMA detail is solely the responsibility of the user. The SMA does not authorize entities to re-publish these details for the purposes of a profit.



Regional Differences: The SMA understands and appreciates there are regional variations or preferences around North America on designing and installing lath, plaster and stucco. The SMA guide details are generic and deemed suitable for most locations and types of buildings. The detail is also not meant to limit alternate methods of proven construction or inhibit regional variations. In the event of a conflict or alternate design to SMA guides, users are advised to ask the responsible parties the following questions.

1. Is there history to verify the alternate will work?
2. Is the variation code compliant?
3. Do SMA product manufacturers agree with the submitted variation?

The SMA is not able to provide a warranty, express or implied, on any detail due to variations in construction, structures, and application of SMA detail. Using an SMA contractor with certified supervisors (SMA Training modules 1-6) can provide a verifiable level of comprehension with regard to flashing and moisture management with stucco assemblies.