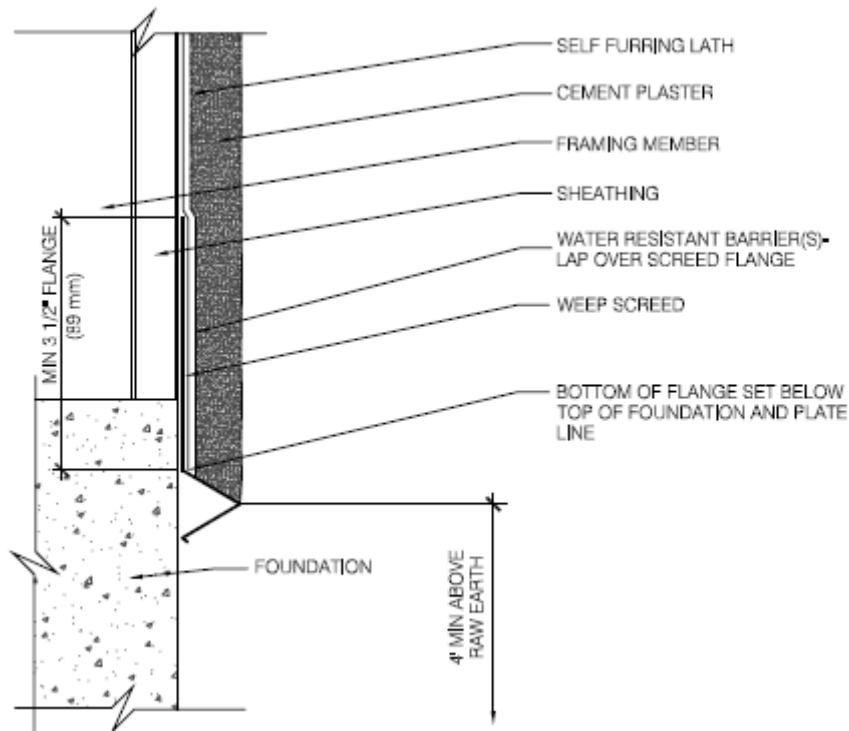


# SMA

STUCCO MANUFACTURERS ASSOCIATION



## Weep Screed For Stucco

The weep screed is code required for stucco over framed walls. Place at base of framing to allow water to “weep” out. The weep screed flange should be a minimum 3 ½ inch tall and lapped by the WRB(s) . The V shape or a casing with weep holes is acceptable.

### Caveats:

- The screed must be 4 inches above earth or 2 inches above hard surfaces. Variations must be approved by the Architect of record and Building Official.
- Do not seal weep screeds or other weep style devices
- For base of wall to roof or deck, refer to SMA details.
- V style weep may be overlapped, Casing style weep shall be abutted.
- 

*This detail is not intended for a specific project and is for guidance only. Use of this detail requires approval from the project architect of record .*