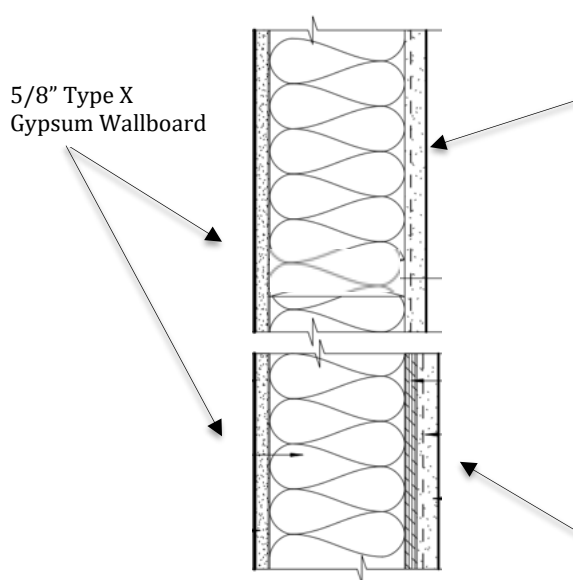


Overview: Portland Cement Plaster (stucco) is the non-combustible membrane for several prescriptive fire-rated assemblies. Per the 2018 International Building Codes (including CA Title 24); Table 721.1(2) Item 15-1.3 prescribes a 7/8 inch cement plaster with an interior surface material as listed within Table 721.1(2) for an assembly rated against fire from both sides. Below are wood framing with or without a sheathing.

OPEN STUD



- 2x4 WOOD STUDS SPACED 16 INCHES OC
- INSULATION (OPTIONAL)
- 18 GA LINE WIRE OR A PAPERBACKED LATH
- WATER-RESISTANT BARRIER PER CODE
- 2.5/3.4 PSY METAL OR 17GA WIRE LATH
- NOMINAL 7/8 INCH CEMENT PLASTER
- PLASTER MIXED AND APPLIED PER SMA ON-LINE TRAINING MODULES 3-5

SHEATHED WOOD FRAMING

- 2X4 WOOD STUDS SPACED UP TO 16 INCHES OC
- SPACING OF STUDS MAY BE INCREASED TO 24 INCHES OC WITH GYPSUM TYPE X SHEATHING (GA FILE#3510)
- WOOD SHEATHING MINIMUM 15/32 INCH APA RATED
- FIBER BATT OR SPRAY IN CELLULOSE INSULATION
- WATER-RESISTANT BARRIER PER CODE
- 2.5/3.4 PSY METAL OR 17GA WIRE LATH
- NOMINAL 7/8 INCH CEMENT PLASTER
- PLASTER MIXED AND APPLIED PER SMA ON-LINE TRAINING MODULES 3-5

1-HOUR EXTERIOR STUCCO WALL

SMA
W-4

CAVEATS:

- SMA W-4 is for three-coat cement plaster, adding a foam sheathing requires NFPA testing
- Use self-furred lath, attach to studs at 7 inches oc
- Fasteners need to be increased the thickness of added sheathing per footnote l of Table 721.1(2)
- Wood studs must comply with footnote m of Table 721.1(2): 2x4 studs are minimum size
- Proprietary or one-coat stucco systems should refer back to the manufacturer

The SMA is an industry wide not-for-profit trade association founded in 1957 and dedicated to the promotion and education of the stucco industry. The local Building Official has the final decision on code interpretation and life/safety. The SMA can provide no warranty, express or implied. More information is available on the SMA website.

www.stuccomfgassoc.com