

# TechTalk



VOL 4 WINTER 2023-24

## NAHB IBS SHOW – Las Vegas

The SMA is again at the NAHB International Builders Show. All the major developers will be there in Las Vegas to be educated and see what is new. Last year the SMA booth was very busy. This year your board of directors opted to go bigger. We have a large peninsula booth in the center of the south hall. The show runs February 26-28, stop by and say hello. This larger booth will attract more attention as it is next to the LIVE demonstration zone. The SMA is working to be part of that LIVE zone next year. Our goal is to promote cement plaster to builders unfamiliar with stucco and help designers who do not know how to detail for stucco.

## Our IBS show sponsors – Help SUPPORT their products:

**QUIKRETE:** An industry pioneer known for its iconic and unmistakable yellow bag of concrete, The QUIKRETE® Companies was founded in 1940. During the past 80 years, The QUIKRETE Companies evolved from a fledgling building material supplier in Columbus, Ohio to the largest manufacturer of pre-blended, packaged concrete and cementitious products in North America. Today, The QUIKRETE Companies is a scalable, single source for commercial, residential and industrial building, repair and rehabilitation products that proudly contributes to the growth and health of our country's structure and infrastructure every day.



Since 1969, Plastic Components has delivered the highest quality products in the industry. We were the first PVC trim manufacturer to submit its products to an independent third-

party testing organization for evaluation and certification. Intertek Testing Services NA Ltd./Warnock Hersey has an on-going process. We are pleased to say that our products meet or exceed the high standards set by ASTM for tensile and flexural strength, dimensional stability, and exterior weather resistance. Our trims are now listed with Intertek Testing Services/ Warnock Hersey - assuring you of outstanding product performance and proven compliance with ASTM standards.

## STUCCO QUIZ: DO YOU KNOW PLASTER?

1. Which of the following is the MOST important item for when installing cement plaster on framed walls?
  - a. Ensure exacting cement to sand ratios.
  - b. That no lath or lath pattern will be visible after the scratch coat.
  - c. Verify the water-resistant barrier is complete to shed water.
  - d. The ability to shave back the brown coat at all trim accessories.
2. Which tool is best for floating the brown coat on a three-coat cement plaster?
  - a. A GREEN sponge float
  - b. A RED sponge float
  - c. A CORK or hard float
  - d. It does not matter what tool is used, just make it look nice.

Answers on last page

**OMEGA:** Omega Products is the leading stucco manufacturer in the United States. Omega's extensive product lines include high performance cementitious and acrylic base coats and finishes that can be used in traditional stucco systems, energy efficient systems or EIFS. Product quality and the best service in the industry have made us the professional's choice for over 40 years.



**STRUCTA WIRE CORP (Division of Clark Dietrich):** Structa Wire is driven to enhance the performance of stucco. As a recognized industry leader, we deliver technically superior products and exceptional service. Since 1999, our innovative, patented products with cold-rolled wire have been elevating the efficiency, structural integrity, aesthetic beauty and profitability of our clients' residential and commercial construction projects across North America.



**ATLAS INSULATION:** Imagine a wall with an uninterrupted thermal barrier that keeps the building envelope protected and ensures long-term energy efficiency. It's also water, air, and vapor resistive, cost effective and can be used in a variety of fire-resistive assemblies. With more than 30 years' industry expertise in polyiso manufacturing, Atlas EnergyShield continuous wall insulation products deliver confidence with proven envelope management performance. Choose a path through our website, catered to your needs and background, or contact a sales rep to learn more.



**TEXAS LATH & PLASTERING CONTRACTORS ASSOC.** TLPCA is an organization that exists for the promotion of quality methods and practices in the walls and ceilings industry. Since 1952, TLPCA members have provided innovation and leadership in quality workmanship in stucco, EIFS, One-coat stucco, veneer plaster, sprayed fireproofing, drywall and acoustical ceilings for the state of Texas.



**TEXSTON:** Manufacturing architectural finishes of the finest quality including mature slaked lime plaster, decorative cements, and other innovative surfaces. Texston has lead and shaped the decorative plaster industry for over 25 years. With projects in Japan, China, Dubai, Europe, Central America, and across the US, our products are chosen for versatility, durability, environmental friendliness, and customer support.



**GMC Building Papers:** GMC makes asphalt saturated building paper designed to offer exceptional performance in resisting water and moisture intrusion in exterior wall assemblies including stucco and other approved wall claddings. IBC and IRC code compliant.



EMIA serves as a vital hub for suppliers, manufacturers, contractors and architects in shaping the future of EIFS. EIMA is the go-to organization for all things EIFS.

## WHY SUPPORT IBS SPONSORS?

We all know that companies must promote their product line to survive. It is a very competitive world today.

The sponsors to the SMA booth work the show NOT to simply push their product line, they promote stucco as a preferred cladding, and while they hope the designers and builders select their product line, that is not the key goal. They know that supporting the overall stucco industry helps us all.

It must be working, because according to the NAHB, who puts on the IBS show, they published an article in their newsletter about stucco being the number one cladding in America. These sponsors want to make sure it stays that way.

## HOW CAN THE CONTRACTOR YOU HELP?

The sponsors need sales to stay viable. They have made the commitment to the general and overall good of the industry with financial support and their time working the SMA booth, asking for nothing in return. Maybe you can say thank you by helping them. Give their products a look, even if not listed in project specification, most designers are open to product lines you prefer. While many products seem similar, it can be as simple as availability, what your crews feel more familiar using. Of course, upgrades never hurt either.

The key point is to support those that support your industry.

# FREEZE-THAW



## L&W SUPPLY:

As one of the nation's largest distributors of building materials. Our vast network is set up to seamlessly work together to meet your needs. At L&W Supply, you'll get the same level of service and the same access to products no matter where you are. Or where your

next job happens to be. It's what makes us the single source for the quality products and services you need to complete your projects on time and on budget.



**Master Wall®**, Inc., manufactures Quality Stucco, Coatings, and Exterior Insulation and Finish Systems (EIFS) for residential and commercial projects. Master Wall® is

well-positioned in the industry – large enough to meet your needs, but small enough to remember your name. Since our beginning in December of 1987, the goal of Master Wall has been to provide our industry with the best quality products backed by informed employees committed to service at a competitive price. Call or visit our website to learn more.



**Parex USA/La Habra Stucco /SIKA** : is one of the world's leading manufacturers of specialty solutions for the construction industry. With over 175 years of combined industry experience, Parex USA and La Habra boast a rich history built on hard work, knowledge, commitment and loyalty. Parex USA, Inc.

## BUILDING TRUST

manufactures some of the leading brands in the industry with 12 manufacturing and distribution sites throughout the United States and growing. Some of these brands include Parex, **La Habra**, Merkrete, El Rey, TEIFS, Merlex, Variance, and Vero. Our product lines consist of Continuous Insulation (CI) Systems, Stucco Solutions, and Tile & Stone Installation Systems. With a dynamic portfolio of innovative products and systems, Parex USA has the solution for your needs. Our continued commitment to providing the best product offerings and customer service has led to us being one of the most trusted and reputable brands in the industry by applicators, distributors, architects, and builders.



As a company, Advanced is driven to develop products that deflect and drain

water to prevent home and commercial building envelopes from experiencing unnecessary moisture damage. Whether you're an architect, builder or homeowner, you'll love our solutions and the protection they provide.

**Stockton Products** was founded in 1949 and is well respected by the lath and plaster industry. Stockton has a historic product line as well as new cutting edge of innovation for drainage trim accessories. Let Stockton products help you make your next job successful and profitable.



Cement stucco has been used in central Europe for centuries: which clearly disproves the Urban myth that cement plaster is not suitable for cold climates. The **Portland Cement Association (PCA)** states *... "stucco has the ability to resist the disruptive forces associated with expansion of freezing water within saturated cement plaster, it is a measure of stucco's durability"*. The SMA agrees with the PCA.

Stucco rarely experiences full saturation as water does not easily pass through the properly mixed and applied cement membrane. Oakridge Labs, the nation's premiere testing facility, states that water exited a stucco membrane applied with two layers of black paper almost as fast as it was poured in during hygrothermal water testing. While freeze-thaw is rarely an issue for stucco in cold climates, there are a few recommendations from the SMA to ensure success.

1. Use approved mixes for basecoats, and air-entrainers can be beneficial against freeze-thaw
2. Hard float the brown coat, this densifies the cement membrane
3. The use of caps on parapets

The SMA publishes a Tech Times on **FREEZE-THAW for CEMENT PLASTER** that is designed to help designers, contractors and SMA members make stucco work in cold climates.



## MORE SMA TECH TIMES PAPERS

SMA has some Tech Times papers on our website. However, we have an extensive library available only to SMA members. This includes details and other resources as well. Contact the SMA office or email [Mark@stuccomfgassoc.com](mailto:Mark@stuccomfgassoc.com) if you need any assistance. Here is a sample of other Tech Times and Reports on Stucco available to members.

**HYGROTHERMAL TESTING:** Oak Ridge National Laboratories (ORNL) is a government testing lab, and they publish a report on stucco. Hygrothermal is testing heat and water on various stucco wall assemblies.

**SEQUENCE OF WORK:** The proper sequence of installation of products is critical to making stucco work. Pushing work out of established sequence is a common problem. The SMA Tech Times paper highlights proper procedures and the consequences for doing work out of sequence.

**ALLOWABLE TOLERANCES:** There are publications that establish recognized allowable tolerances by various trade work. SMA has them for our members.

**SEALANT ON FASTENER HEADS:** While it is popular to put sealant on fasteners used to attach lath, there are also potential unintended consequences. Similar to asphaltic paper on masonry substrates, seems like a good idea, but is it?

**LIFE EXPECTANCY:** We know stucco lasts longer than other claddings, but how do you prove it. SMA has a report for the Federal Government “ Stucco has a useful life of 100 years”.

**STUCCO PARAPETS:** Most plastering contractors are fearful of cement plaster parapets, and with good reason. While the SMA urges the use of metal caps, we have a procedure with lath and cement over the top of the parapet. There are limitations and caveats, contact the SMA to learn more.

**THE SMA TECHNICAL COMMITTEE:** Contact the SMA if you want to be on this committee. Help shape our future.

*The SMA has much more information on stucco and items that touch stucco. If you find yourself thinking, I have never seen that before? Call the SMA before you start. Protect yourself!*

## CLIMATE ZONES

The 2021 International Codes have some specific requirements for stucco over wood-based sheathing. The country is broken into three basic climate zones for moisture.

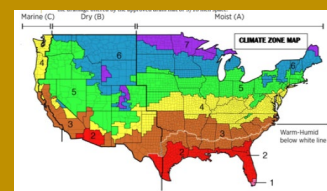
**ZONE A** is the eastern half of the United States and considered MOIST.

**ZONE B** is the western half of the United States and considered DRY.

**ZONE C** is the very western coast of the United States and considered MARINE.

In short, Zone A and C want drainage mats, or a positive means of drainage proven to meet ASTM E 2273 or Annex A-2 of ASTM E 2975 with 90% efficiency.

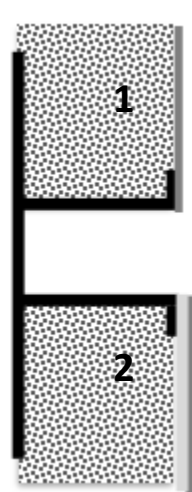
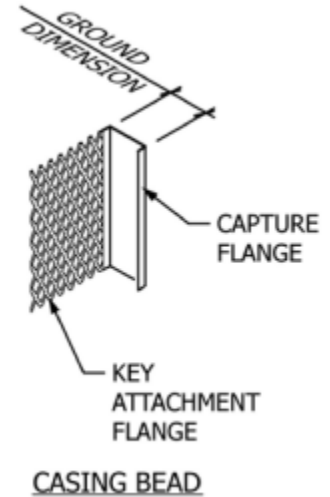
Refer to SMA Tech Times paper on the website to learn more!



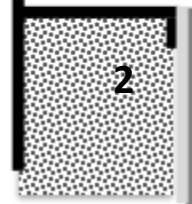


## THE CAPTURE FLANGE

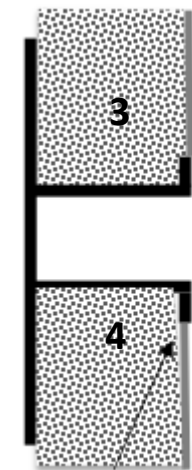
The capture flange on a stucco trim accessory is that small return lip common on casing beads and reveals. A casing bead or a reveal can serve several functions, one is being a ground for the final thickness of plaster. This is even made clear by ASTM C 1861 as the graphic they publish illustrates. The plasterer will use the trim accessory as a guide for screeding and establishing the thickness of plaster. Similar to form work in flat concrete pours. The difference is plasterers often have a capture flange on the trim accessory. A common inquiry is “how should the finish coat of plaster be terminated?” Should it be over the flange, stop short of the flange and do I need to taper or cut the brown coat back. There is no set rule in the code or ASTM. Industry practice can vary around the country. Variations with finish materials can alter the practice. There is no right or wrong way, but there are caveats.



1. **Finish over the flange.** This is common and the least expensive option. One caveat is that due to thermal or minor stress movement, a hairline crack may develop along the edge of the flange.



2. **Base and mesh (crack suppression membrane)** While this hides cracks, it also adds noticeable thickness.

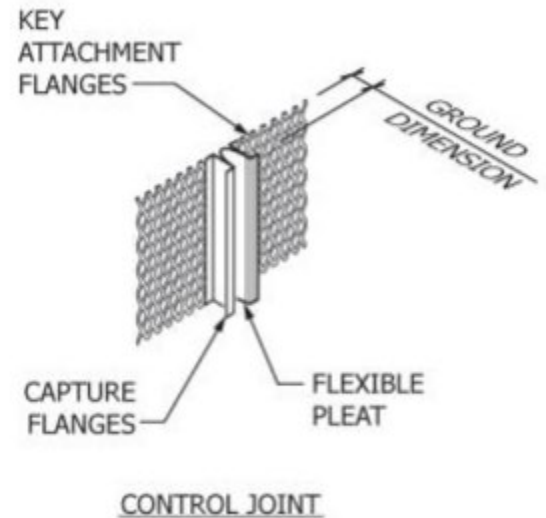


3. **Taping** This method requires taping the capture flange which can be difficult to do, particularly in production work. It can look great or worse than a potential hairline crack.

SHAVED BACK METHOD

4. **Shave Back** The shaved back method requires tapering the brown coat back to the allow room for the finish to become flush with the capture flange. This can be tedious work. Adding #2 and for will certainly add cost to plastering.

Plastering contractors should discuss the options with the owner before plastering.



One-piece control joints often have capture flanges. Many come with a factory applied protective tape that can be removed prior or after the finish coat is applied. If removal of the tape is after finish coat application, removal right after application of the finish is preferred for a cleaner edge.

## MAKE MEMBERSHIP COUNT

The SMA survives on membership dues. This makes you important to us and that you get value out of your SMA membership. Membership also promotes stucco, your products and services to install them. While we cannot promote a specific product, favor a manufacturer or a contractor, we can help with upgrades and products that fit job needs.

The SMA has more “plastering” contractors as members than any other trade association. SMA is also being referenced in more and more project specifications as we reach more and more architects across the country.

In 2023 the SMA did another live webinar for the architectural community. Designers from all over the US and Canada logged in to learn about stucco, the benefits, the detail, physical properties and best practices. The SMA knows that designers who feel comfortable with stucco will use stucco. The SMA is a third-party resource they have learned to trust. This comes back to give you more business. After all designers have options with cladding choices.

SMA Certification shows your customers you are a step above the rest. Because being the lower bidder is not a path of success



## SMA NEWS:

**SAVE THE DATE:** The SMA is finalizing a membership meeting for April 3, 2024, in Dallas, Texas. Details to come soon. We are also planning meetings in other states. We are growing!

**COMMITTEES:** Two committees are about to start TECHNICAL and PROMOTIONAL. An Email blast with information will be coming very soon.

**BOARD:** The SMA will hold elections for a new Board of Directors. This April ballots will be going out. Want to run, lead the industry? Manufacturers, Dealers and Contractors are all eligible. Contact the SMA office to learn more.



SMA Board of Directors at the IBS Show on Las Vegas

### ANSWERS:

1. C- Cement plastering must serve its intended purpose by providing a weather-tight cladding. The water barrier behind stucco should only see “incidental” water, but on framed walls, water must be kept out.
2. C- the floating process densifies the cement plaster making it more crack and water resistant. Only a hard float does this. In addition, it is an undisputed item in ASTM C926.

SMA office : (714) 473-9579

[Marlene@stuccomfgassoc.com](mailto:Marlene@stuccomfgassoc.com)

[www.stuccomfgassoc.com](http://www.stuccomfgassoc.com)